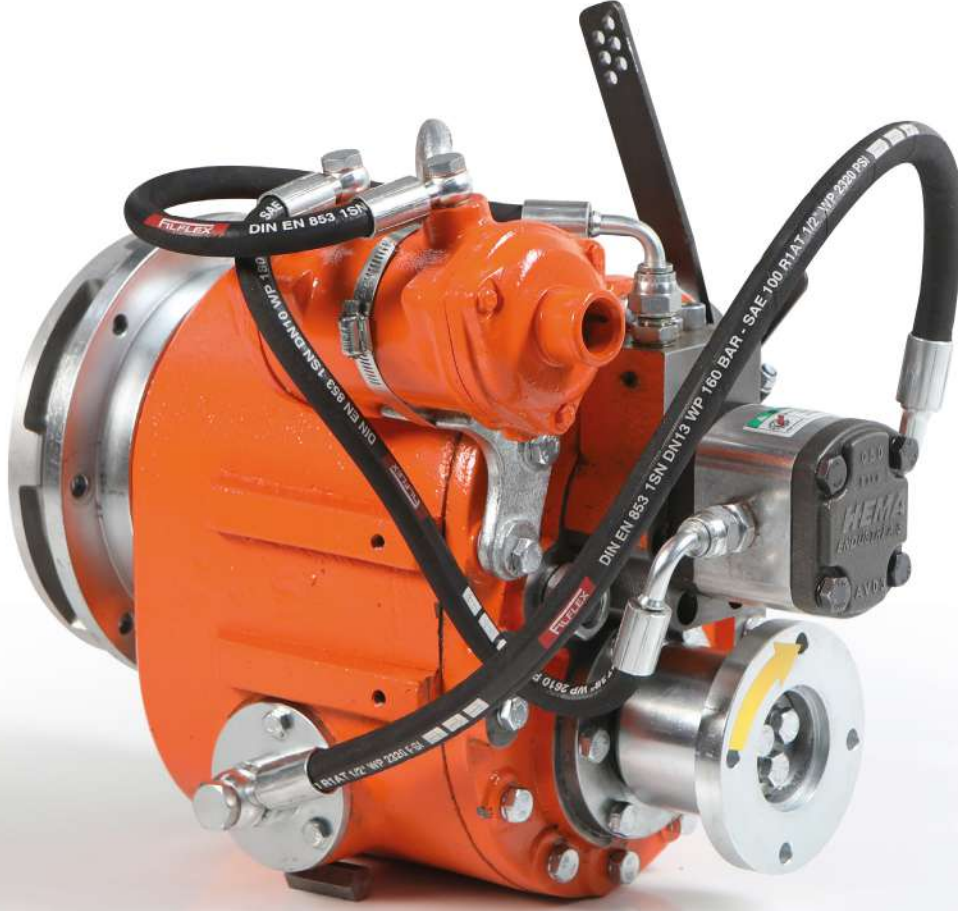


GEGA 160

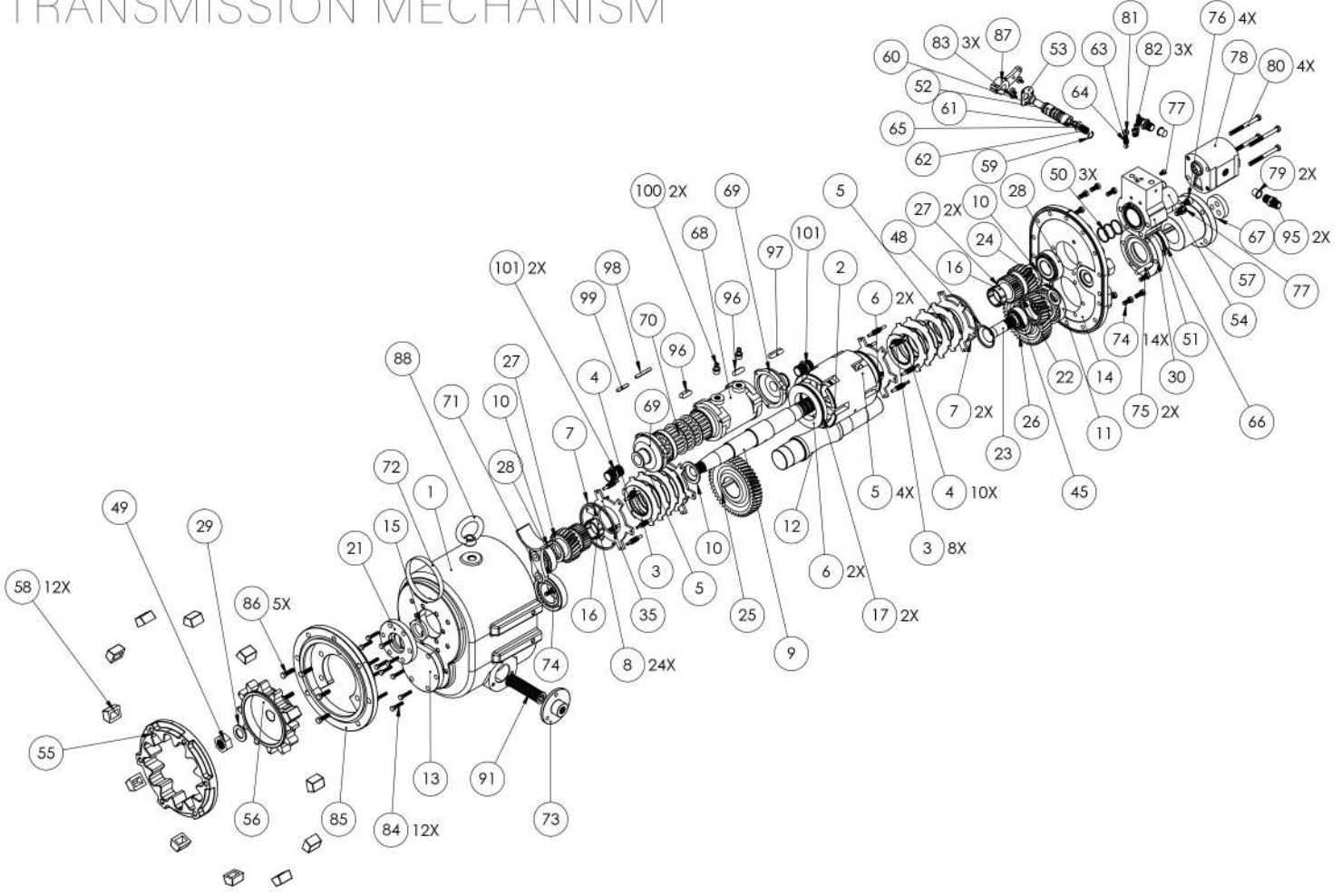


GEGA 160 Hidrolik Deniz Şanzımanı 24 HP (18,4 KW) ile 160 HP (88,3 KW) arasındaki motorlara akuple edilir. Şanzıman seçimi yapılırken motor gücüne, redüksiyon oranına, teknenin yüklü ağırlığına bakılmalıdır.

GEGA 160 Hydraulic Maritime Transmission can be couple for all engines between 24 HP (18,4 KW) to 160 HP (88,3 KW). While you are choosing transmission mechanism, you have to know engine's power, reduction rate, the boats loaded weight.

HİDROLİK DENİZ ŞANZIMANI

HYDRAULIC MARITIME TRANSMISSION MECHANISM



TEKNİK ÖZELLİKLER TECHNICAL SPECIFICATIONS

Ağırlık / Weight: **95 kg.**
Hidrolik Çalışma Basıncı / Hydraulic Working Pressure: **25-30 Atm.**
Yağlama / Lubrication: **3 Lt.**

YAĞ ÇEŞİTLERİ / OIL TYPES

Mobil	Mobilfluid 422
Shell	Tellus
Castrol	Agri powertrans

GEGA 160

Redüksiyon Oranı Reduction Rate	
İleri/Forward	Geri/Reverse
2/1	1,78/1

Hafif Hizmet Light Duty

HP	KW
160	88,32

Orta Hizmet Medium Duty

HP	KW
100	73,6

Ağır Hizmet Continious Duty

HP	KW
80	58,88

Devir RPM

Min	Max
2000	4500